

DHP 50

Dimensions DHP 50

Total floor space $6,100 \times 6,150$ mm
37.5 m²

Total height/with air purifier
3,100 / 3,500 mm

Machine mass
15,200 kg

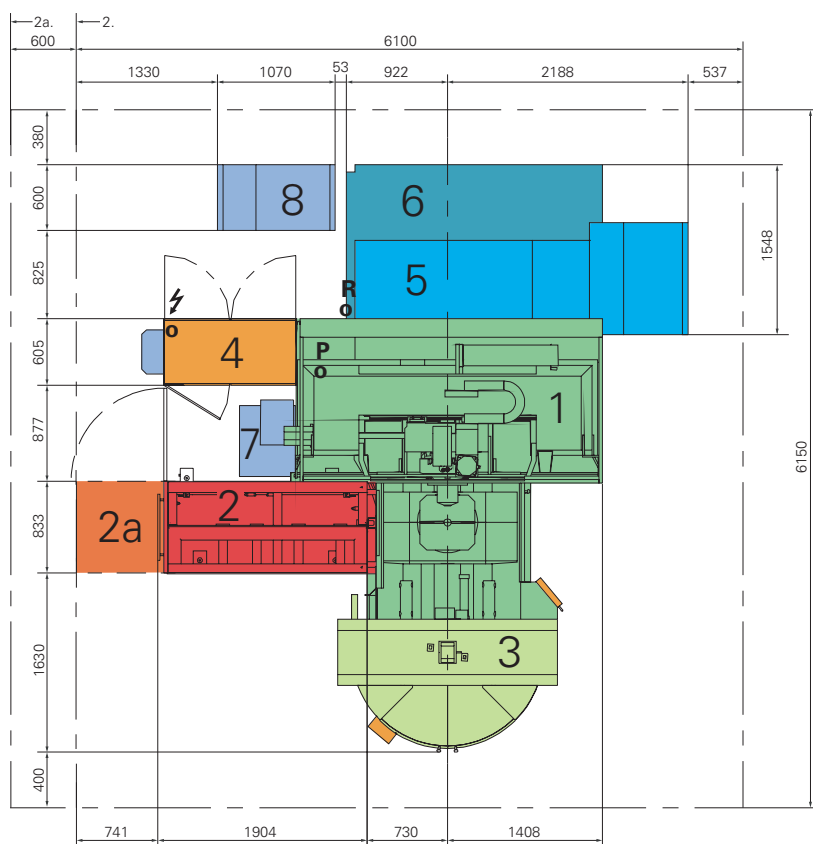
Total mass with ATC (65-115)
18,200 kg

Max. workpiece volume ($\phi \times h$)
 $\phi 700 \times 800$ mm

Noise limit, according to ISO 10791-11
75 db

Electrical supply
Standard $3 \times 400 / 460 (\pm 10\%)$ V
Frequency $50 / 60 (\pm 1\%)$ Hz
Current, spindle $12,000 \text{ min}^{-1}$ 185 / 160 A
Power supply, spindle $12,000 \text{ min}^{-1}$ 130 kVA

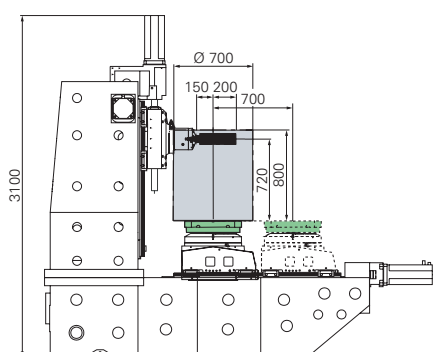
Pneumatic supply
Pressure, min./max. 0.5 / 1.2 MPa
Max. flow at 0.5 MPa 400 L/min



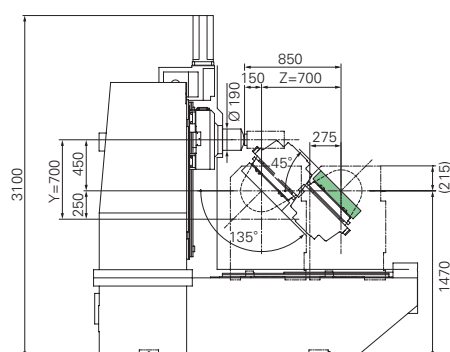
- ⚡ o Electrical connection
- P o Pneumatic connection
- R o Cooling system connection
- 1. Machine
- 2. Tool changer (108)
- 2a. Tool changer (108-218)
- 3. Pallet changer
- 4. Electrical cabinet
- 5. Chip conveyor
- 6. Coolant tank
- 7. Hydraulic unit
- 8. Cooling unit

(mm)

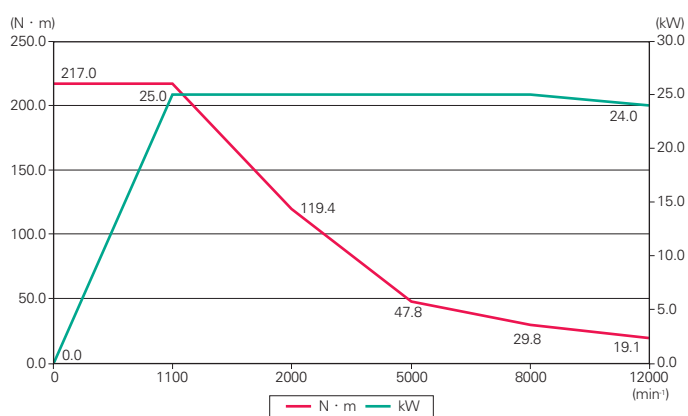
4-axis



5-axis



Spindle speed torque / Output diagram



12,000 min⁻¹ spindle

Max. spindle speed	12,000 min ⁻¹
Max. speed with max. torque	1,100 min ⁻¹
Nominal power S1 (100%)	25 kW
Nominal torque S1 (100%)	215 N·m
Max. load thrust	700 daN