

DHP 80

Dimensions DHP 80

Total floor space $7,000 \times 10,000$ mm
70 m²

Total height/with air purifier
4,100 / 4,200 mm

Machine mass
25,000 kg

Total mass with ATC (100)
28,730 kg

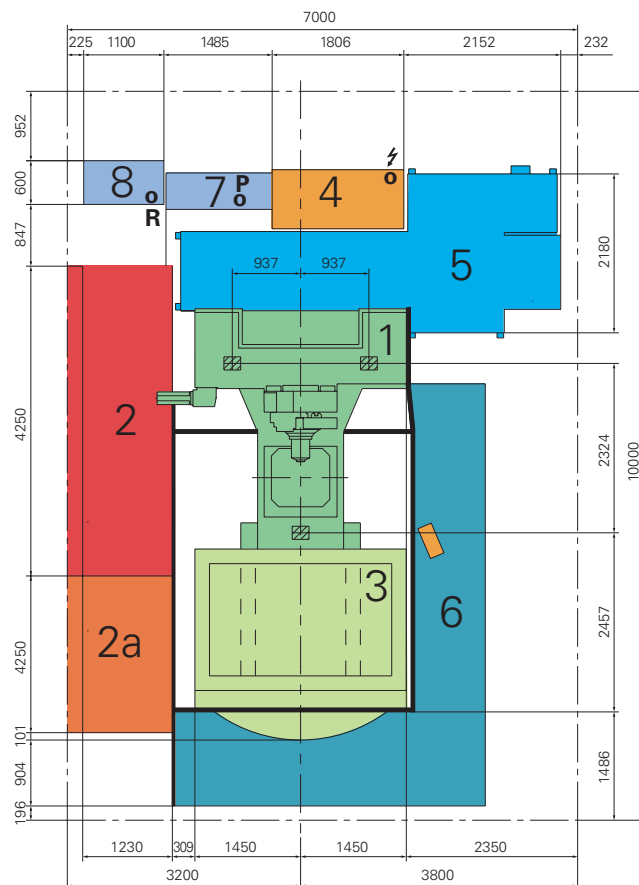
Noise limit, according to ISO 10791-11
75 db

Electrical supply

Standard $3 \times 400 / 460 (\pm 10\%)$ V
Frequency $50 / 60 (\pm 1\%)$ Hz
Current, spindle $12,000 \text{ min}^{-1}$ 215 / 190 A
Power supply, spindle $12,000 \text{ min}^{-1}$ 150 kVA

Pneumatic supply

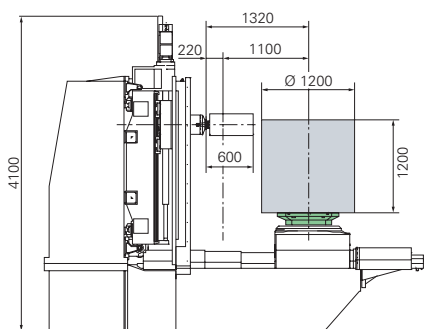
Pressure, min./max. 0.5 / 1.2 MPa
Max. flow at 0.5 MPa 400 L/min



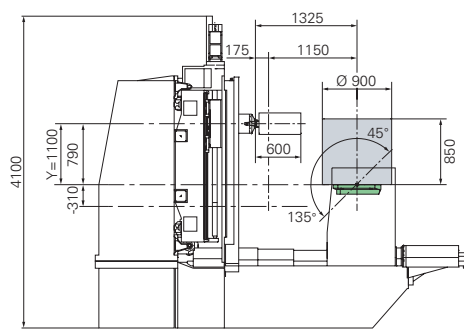
- ⚡ ○ Electrical connection
- P ○ Pneumatic connection
- R ○ Cooling system connection
- 1. Machine
- 2. Tool changer (99)
- 2a. Tool changer (114-264)
- 3. Pallet changer
- 4. Electrical cabinet
- 5. Chip conveyor
- 6. Platform
- 7. Hydraulic unit
- 8. Cooling unit

(mm)

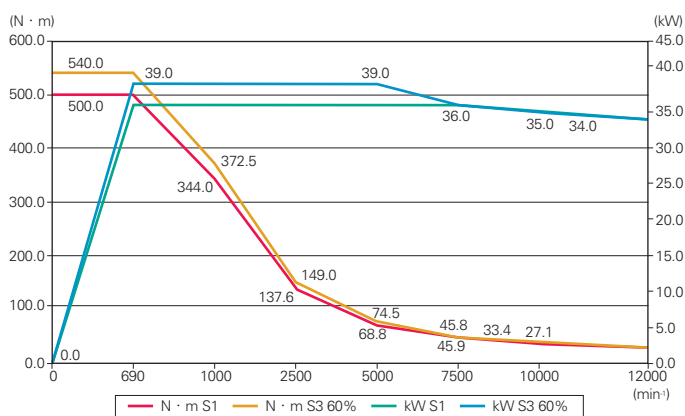
4-axis



5-axis



Spindle speed torque / Output diagram



12,000 min⁻¹ spindle

Max. spindle speed	12,000 min ⁻¹
Max. speed with standard tool ISO SK 50	10,500 min ⁻¹
Max. speed with max. torque	690 min ⁻¹
Nominal power S1 (100%)	36 kW
Nominal torque S1 (100%)	500 N·m
Max. load thrust	1,500 daN