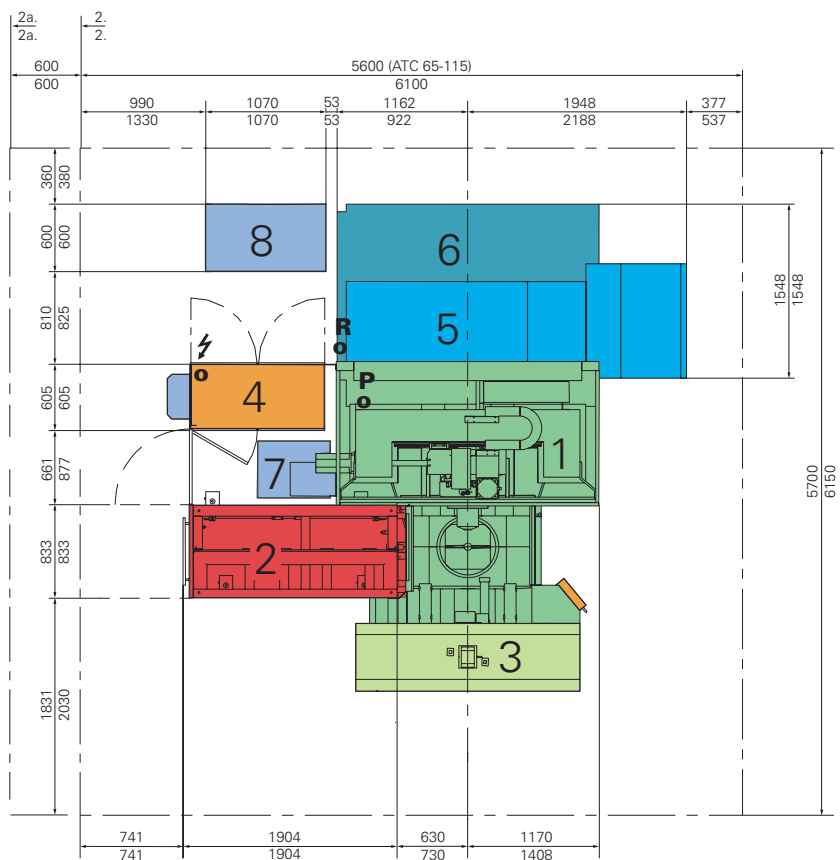


# JIG 700

## Dimensions JIG 700

Total floor space	6,100 × 6,150 mm 37.5 m <sup>2</sup>
Total height/with air purifier	3,100 / 3,500 mm
Machine mass	15,200 kg
Total mass with ATC (4-axis: 108, 5-axis: 65-115)	18,200 kg
Max. workpiece volume (ϕ × h)	ϕ 700 × 800 mm
Noise limit, according to ISO 10791-11	75 db
Electrical supply	
Standard	3 × 400 / 460 (± 10%) V
Frequency	50 / 60 (± 1%) Hz
Current, spindle 12,000 min <sup>-1</sup>	185 / 160 A
Power supply, spindle 12,000 min <sup>-1</sup>	130 kVA
Pneumatic supply	
Pressure, min./max.	0.5 / 1.2 MPa
Max. flow at 0.5 MPa	400 L/min

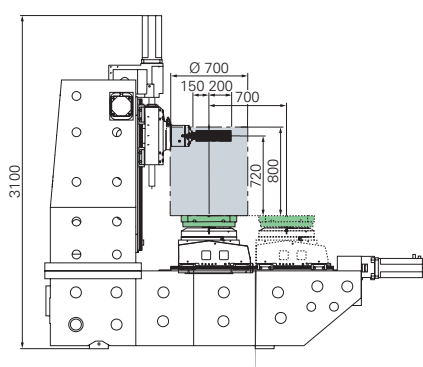


Upper: 4-axis  
Lower: 5-axis

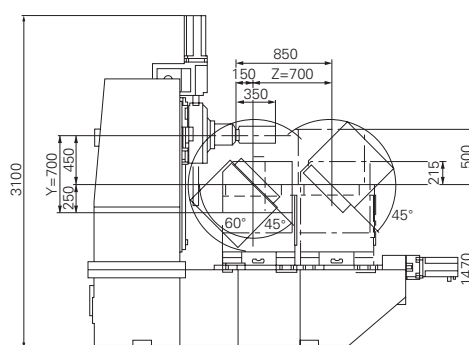
- ⚡ ○ Electrical connection
- P ○ Pneumatic connection
- R ○ Cooling system connection
- 1. Machine
- 2. Tool changer (108)
- 3. Pallet loader
- 4. Electrical cabinet
- 5. Chip conveyor
- 6. Coolant tank
- 7. Hydraulic unit
- 8. Cooling unit

(mm)

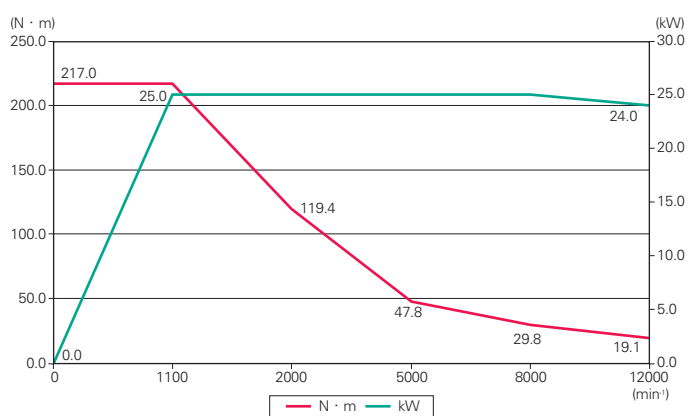
4-axis



5-axis



## Spindle speed torque / Output diagram



## 12,000 min<sup>-1</sup> spindle

Max. spindle speed	12,000 min <sup>-1</sup>
Max. speed with max. torque	1,100 min <sup>-1</sup>
Nominal power S1 (100%)	25 kW
Nominal torque S1 (100%)	215 N·m
Max. load thrust	700 daN